

BROOKLYN

TECHNICAL BREAKDOWN

Formula

Formula A: 10BB + D10 (Toner)

Formula B: Rose Gold + D10 (Demi)

Formula C: LtBB (Pure Tone) + D10 (Demi)

Formula D: Silver Gray + D10 (Demi)

Formula E: Smokey Lilac + D10 (Demi)

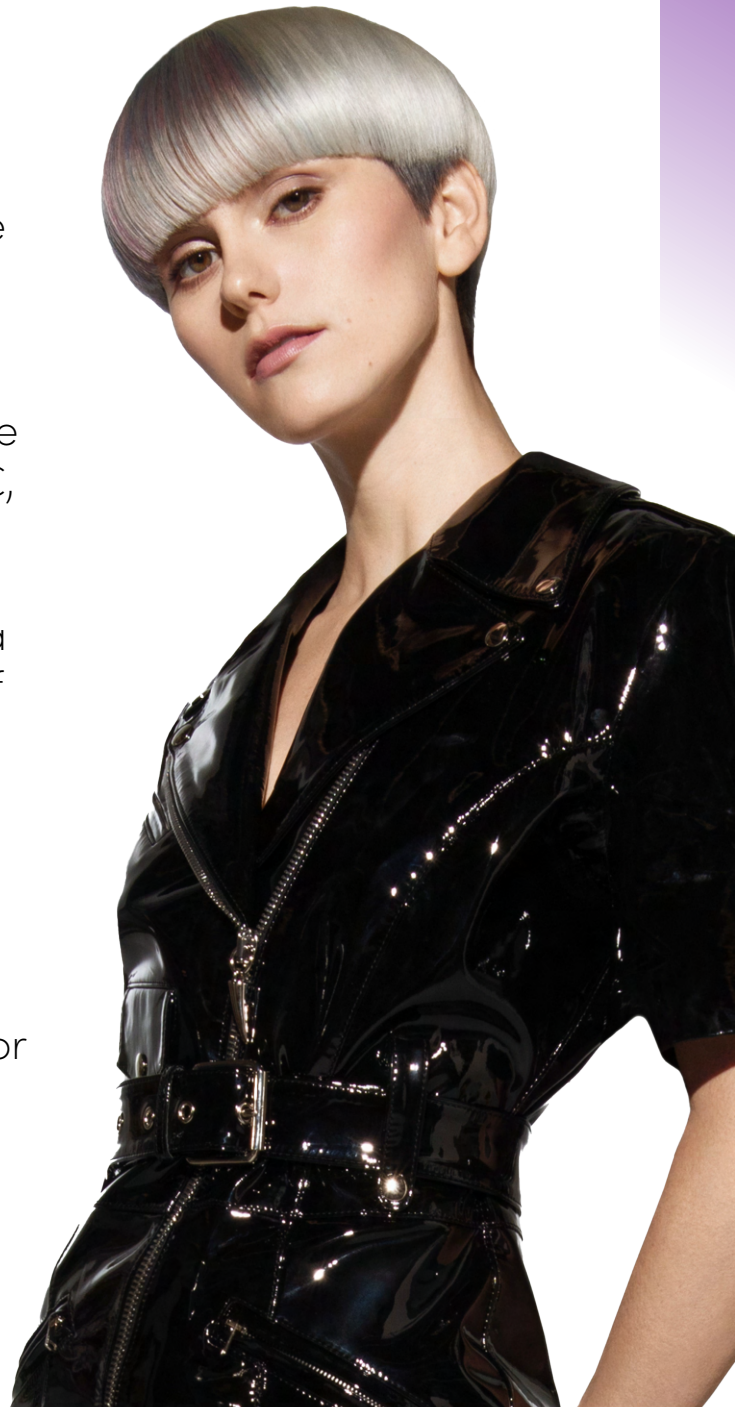
1. Model was pre-lightened to pale yellow.
2. Apply Formula D to the nape and side undercut.
3. Form a narrow triangle along parting from the front of crown to center of eye on the same side. Apply Formulas B, C, and E using horizontal foil slices.
4. At fringe, place 3-4 foils using Formula B to create a shine line at the round of the head.
5. While foils are processing, apply Formula A to the rest of the hair; process 20 minutes.
6. Shampoo, towel dry, apply CLICS Color Lock, process for 5 minutes, rinse and condition. Blow dry and style.

Credits:

Photographer: @damiencarneyprofessional

Hair Team: @corirandall @dupalstudio
@brittbishophair @damiencarneyprofessional

Makeup: @cocozhumakeup



BROOKLYN

TECHNICAL BREAKDOWN

Formula

Formula A: CLICS Crème Lightener + D20

Formula B: CLICS Crème Lightener + D25

Formula C: CLICS Crème Lightener + D30

Formula D: 10BB + D10 (Toner)



1. Beginning at the nape, apply Formula A using horizontal foil slices.
2. Above the occipital, apply Formula B using horizontal foil slices.
3. Sides and top of head, horizontal foil slices also with Formula B.
4. Create a triangular section from the outside corner of each eye to center top of head. Using horizontal foils, apply Formula C.
5. Process foils until a pale yellow is achieved, rinse and shampoo.
6. On dry hair, apply Formula D from roots to ends; process for 20 minutes.
7. Shampoo, towel dry, apply CLICS Color Lock, process for 5 minutes, rinse and condition. Blow dry and style.

Credits:

Photographer: @damiencarneyprofessional

Hair Team: @corirandall @dupalstudio
@brittbishophair @damiencarneyprofessional

Makeup: @cocozhumakeup

BROOKLYN

TECHNICAL BREAKDOWN

Formula

Formula A: CLICS Crème Lightener + D20

Formula B: VR 3.5g + R 14.5g + V 2g + D10 (Demi)

Formula C: 10N 10g + 8N 6g + OY 4g + D10 (Demi)

Formula D: 4N 10g + RO 5g + OY 2.5g + Y 1g + VR 1.5g + D10 (Demi)

1. Place 4 inverted triangular sections spaced equally below round of head. Pre-lighten using Formula A. Rinse, shampoo, and blow dry hair.
2. Place 1 foil slice on each side at bottom of each triangle and apply Formula C.
3. Apply Formula B to the rest of triangle.
4. Apply Formula D to rest of hair; process 20 minutes.
5. Shampoo, towel dry, apply CLICS Color Lock, process for 5 minutes, rinse and condition. Blow dry and style.

Credits:

Photographer: @damiencarneyprofessional

Hair Team: @corirandall @dupalstudio
@brittbishophair @damiencarneyprofessional

Makeup: @cocozhumakeup



BROOKLYN

TECHNICAL BREAKDOWN

Formula

Formula A: CLICS Crème Lightener + D20

Formula B: 12N + D20

Formula C: 5N 2g + O 12.5g + OY 4g + Y 2.5g + RO 4.5g + R 2g + D10



1. Using Formula B, de-colorize entire head to achieve a level 8 gold. Shampoo and blow dry hair.
2. Place 5 inverted triangular sections below crown at back of head; 2 in the nape, 3 above the occipital. Using foil slices, apply Formula A to all 5 sections.
3. At fringe and front hairline, place baby light foils using Formula A.
4. At top of head, place 10-12 foil slices using Formula A.
5. Shampoo and blow dry.
6. Apply Formula C to entire head. Process for 30 minutes.
7. Shampoo, towel dry, apply CLICS Color Lock, process for 5 minutes, rinse and condition. Blow dry and style.

Credits:

Photographer: @damiencarneyprofessional

Hair Team: @corirandall @dupalstudio
@brittbishophair @damiencarneyprofessional

Makeup: @cocozumakeup